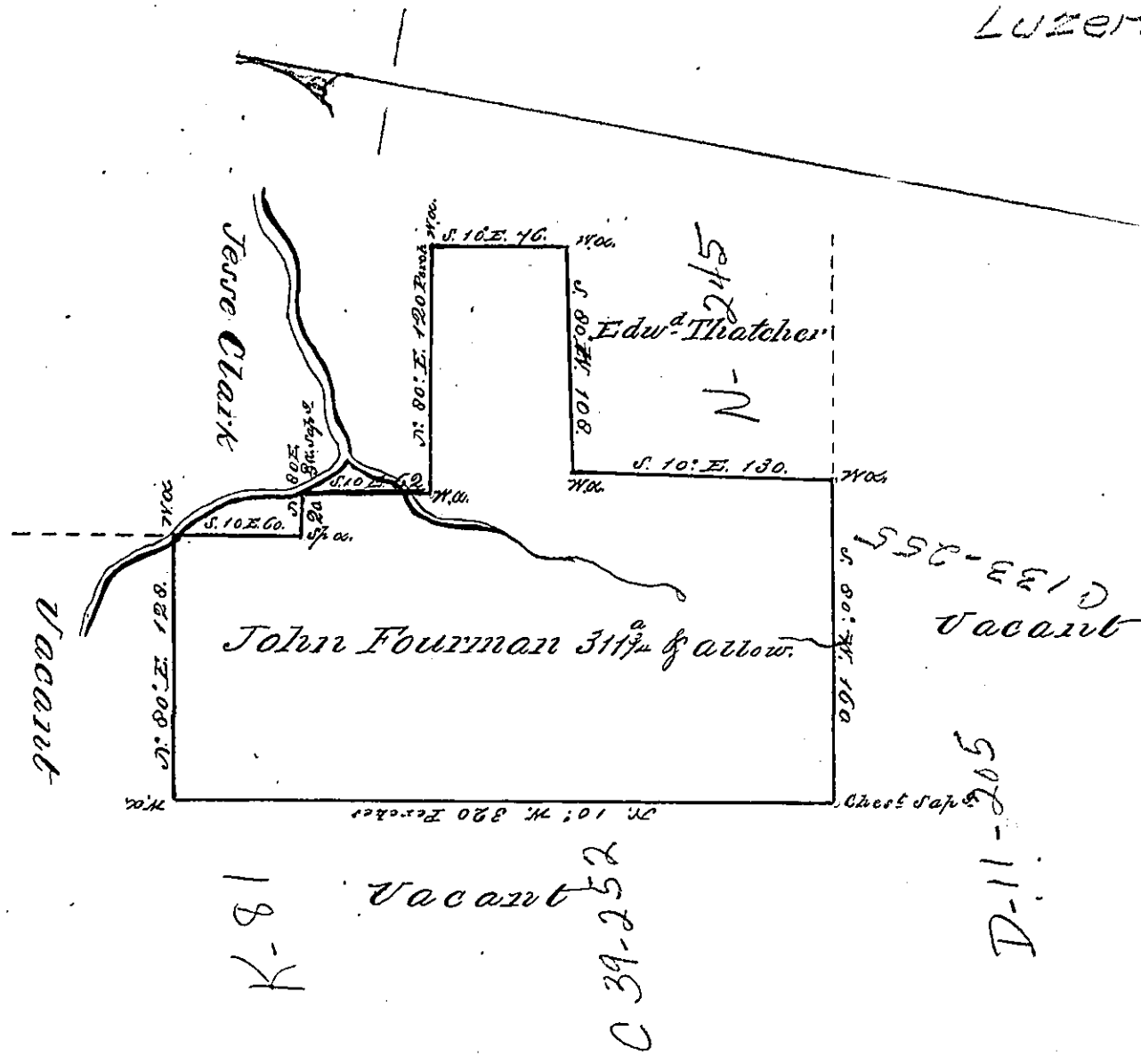


Sug. Loaf.  
Luzerne.



A draught of a Tract of Land called  
 Situate on the Southernly side of Mescopet  
 Creek adjoining Land Surveyed for Edward  
 Thatcher & Jesse Clark in the County of  
 Northumberland Containing Three hun-  
 dred & Eleven Acres & three quarters of an  
 acre besides the usual allowance of  
 6 1/2 cent for Roads &c. Surveyed the 12<sup>th</sup>  
 day of November 1773 for John Fourman  
 In pursuance of an order dated the  
 3<sup>d</sup> day of August 1769 Numbered 3701.

John Lukens Esq. Surveyor Genl

by Chas. Stewart Esq. Ad.

IN TESTIMONY that the above is a copy of the original remaining on file in the  
 Department of Internal Affairs of Pennsylvania, made con-  
 formably to an Act of Assembly approved the 16th day of  
 February, 1833, I have hereunto set my Hand and caused  
 the Seal of said Department to be affixed at Harrisburg, this

Thirtieth day of January 1877  
 Wm. Mandlep  
 Secretary of Internal Affairs